

SHOW ME RENEWAL TOWN HALL

STUDENTS & FAMILIES

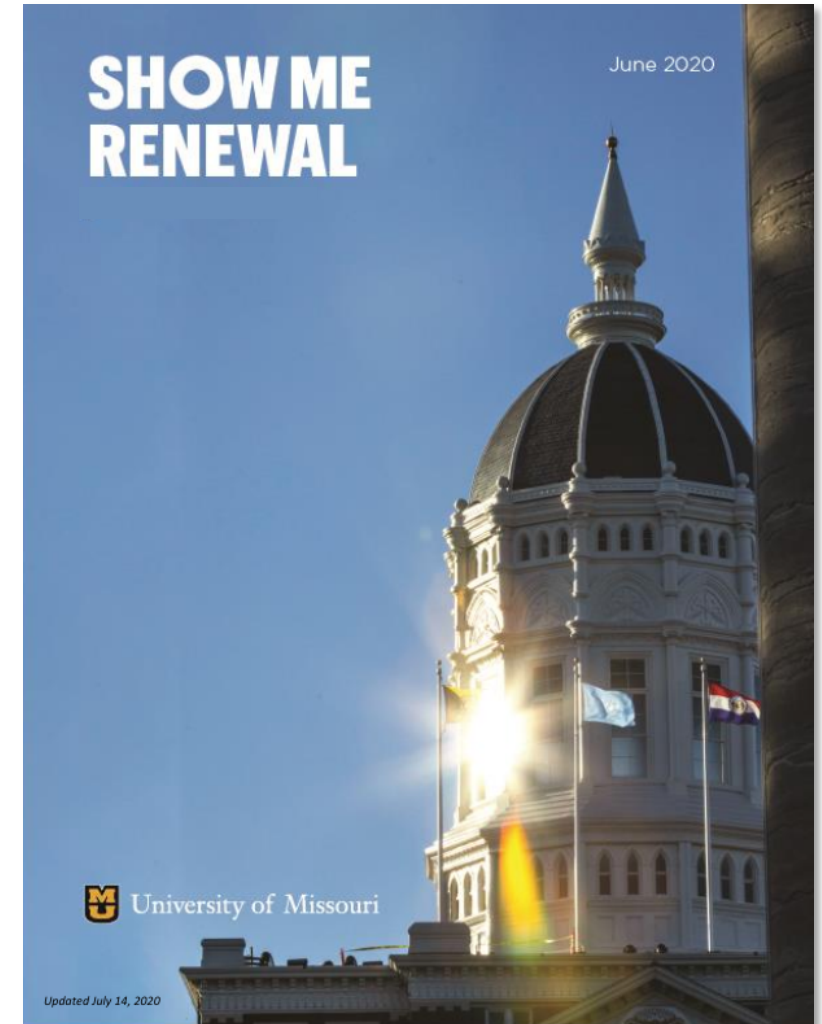
SUBMIT YOUR QUESTIONS AT: [MIZZOU.US/SMR-TOWNHALL](https://mizzou.us/smr-townhall)

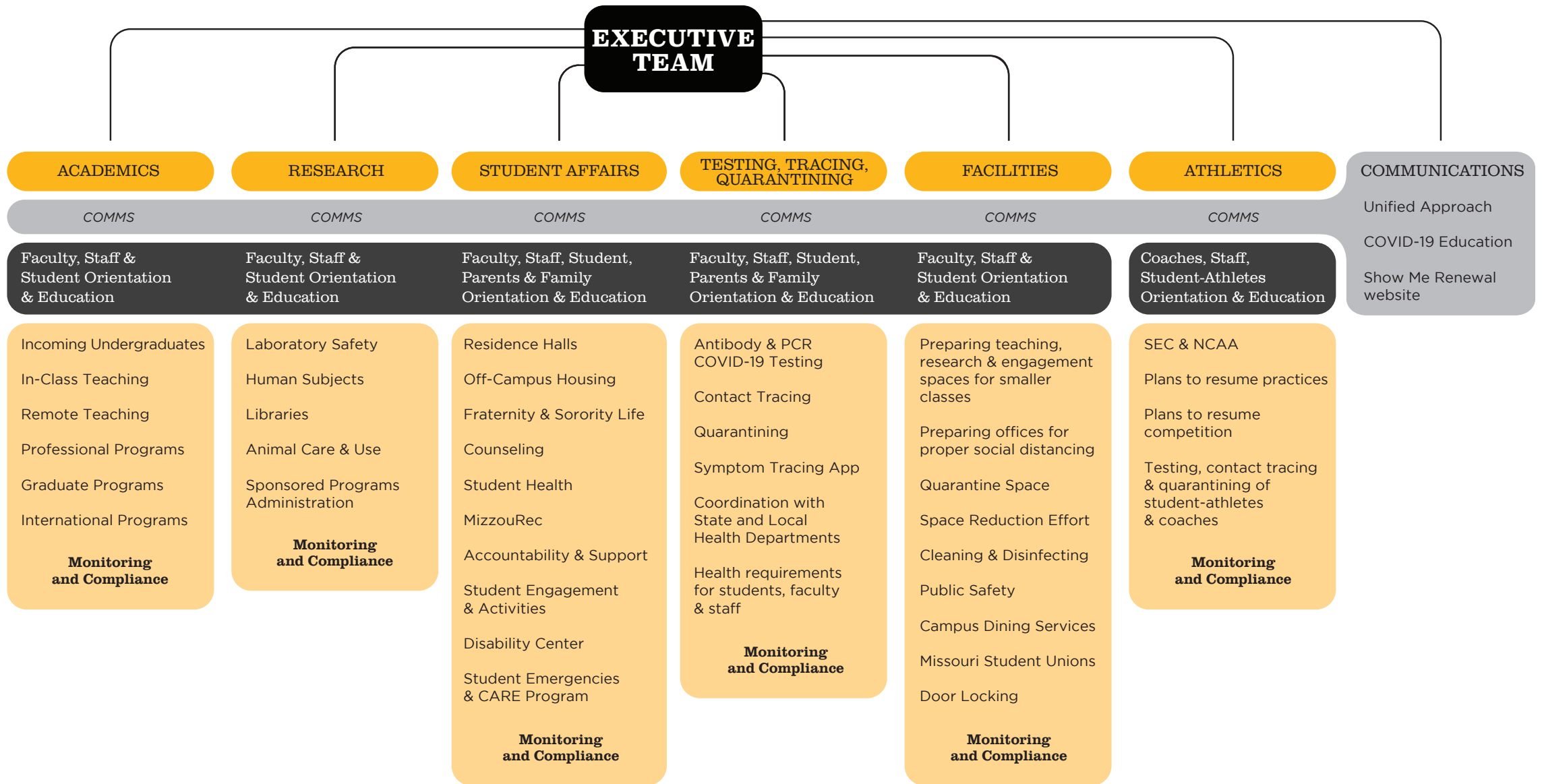


University of Missouri

WHAT IS SHOW ME RENEWAL?

- Safe reopening of on-campus activities
- Your health and well-being are our top priority
- The path to renewal requires a cautious and strategic approach
- We will continue to work closely with the Boone County Public Health & Human Services, the CDC and our own experts at MU Health Care to follow public health and safety guidelines
- Designed to minimize the transmission of COVID-19 at the campus and community
- Our flexible plan will adapt – and already has – to changing conditions
- [Renewal.Missouri.edu](https://renewal.missouri.edu) has up-to-date details





KEY EXPECTATIONS

- Maintain a 6-foot social distance
- Wear face covering
- Wash your hands
- Monitor your health daily, stay home if you are ill
- Practice same precautions whether you are on campus or off-campus

It's for your health as well as those around you.

The rich experience of on-campus learning, research, athletics and camaraderie depends on you.



MU'S COVID-19 TESTING

MU Health Care:

- 650 Physicians
- 1,300 Nurses
- Up to 400 beds for COVID patients can be made available
- In-house testing capabilities of 1,500 samples per day (plan is to increase to 3,000/day by September)

There are two drive-through sites for testing:

- MU softball field (2 lanes)
- Mizzou North (2 lanes)
- Results within 24 to 72 hours



#MASKUPMISSOURI

City of Columbia voted to require face coverings in public:

Face coverings required:

In most situations on campus - in class, in campus buildings, hallways

Do not need face covering when:

- You are alone in a private workspace
- You are outdoors and able to keep 6 feet distance from others

Instructors will wear a face shield when teaching and will have 6 feet distance from students



LECTURE HALL CHANGES



MODIFIED COMMON AREAS



STUDENT CENTER SPACING



SHOW ME RENEWAL
TOWN HALL

THANK YOU

**A RECORDING OF THIS FORUM AND FOLLOW-UP INFORMATION
WILL BE AVAILABLE AT: [CHANCELLOR.MISSOURI.EDU/TOWN-HALLS](https://chancellor.missouri.edu/town-halls)**



University of Missouri